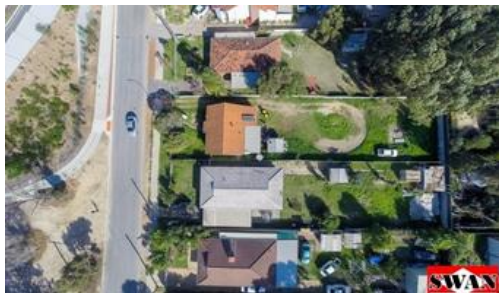




## 9 & 11 Beaconsfield Ave, Midvale



### RARE OPPORTUNITY!

Secure these two properties being sold together, creating a massive 1692sqm block with development approval already attained for 7 sites. There are also plans available for seven, 3 bedroom, 2 bathroom homes.

There are currently two dwellings sitting on the blocks, so you could bring them back to their former glory and rent until ready to develop or demolish and start your project straight away.

This prime location is close to schools, a day care centre, transport, Midland Gate, the new hospital and upcoming Curtin University campus.

All the initial hard work and expense is out of the way, so the development can commence as soon as possible. The astute buyer will see value here. Plans and approvals are available on request so please call Trevor for further information.

The above information provided has been furnished to us by the vendor/s. We have not verified whether or not that information is accurate and do not have any belief in one way or the other in its accuracy. We do not accept any responsibility to any person for its accuracy and do no more than pass it on. All interested parties should make and rely upon their own inquiries in order to determine whether or not this information is in fact accurate.

🛏 6 🌐 2 🚗 2

**Price** Fr \$250,000 ea OR in the \$500's for both!

**Property Type** residential

**Property ID** 1777

**Land Area** 1,692 m<sup>2</sup>

### Agent Details

Trevor Black - 0419 923 858  
Gabriella Black - 08 9255 1444

### Office Details

Midvale  
Unit 3 1 Muros Pl Midvale WA 6056  
Australia  
08 9255 1357

