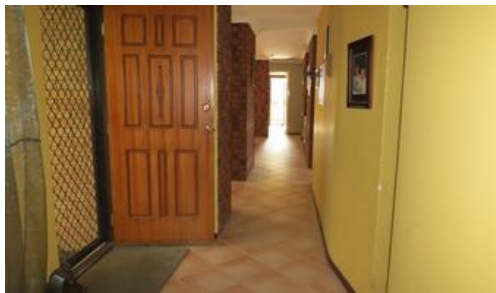




21 Crossway, Swan View



Another one SOLD!

REMINISCENT OF A HILLS HOME

This well-built homely property is tucked away at the top end of a cul-de-sac location and is adjacent to open park space.

The huge master bedroom not only incorporates the sleep area but also has an additional space, creating the perfect parent's retreat or teenage hideaway.

There is a sunken lounge with step-up formal dining/computer nook and the well-appointed galley style kitchen overlooks the family/informal dining area.

For comfort in the summer and winter months, there is a Daikin reverse cycle fully ducted air-conditioning system with 5 zones for economical use. There are roller shutters to all windows and the roof tiles have been recently sprayed.

Outside, the front yards are easily maintained plus to the rear is a large workshop with roller door and vehicular drive-through access. All in all, this property represents great value and gives you the option to perhaps revamp the kitchen and bathrooms without fear of over-capitalising.

So book your appointment to view today as viewing will allow you to fully appreciate the opportunities on offer.

🛏 4 🚿 2 🚗 2

Price	SOLD for \$350,000
Property Type	residential
Property ID	1801
Land Area	696 m2

Agent Details

Office Details

Midvale
2/220 Morrison Road Midvale WA 6056
Australia
08 9255 1357



The above information provided has been furnished to us by the vendor/s. We have not verified whether or not that information is accurate and do not have any belief in one way or the other in its accuracy. We do not accept any responsibility to any person for its accuracy and do no more than pass it on. All interested parties should make and rely upon their own inquiries in order to determine whether or not this information is in fact accurate.