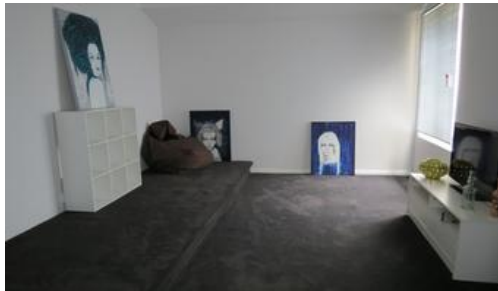


Sold



## 6 Hoveton Cct, Aveley



### Another one SOLD!

Genuine, realistic sellers say SELL!!!!

Don't build.....this house is your opportunity to save lots of \$\$\$.

This almost new family home is one the bigger properties available in the area and the street frontage belies the expansive interior.

Upon entering, the hallway leads to one of the bedrooms with study/office adjacent whilst the designated theatre room is central to the home has step up stadium seating. Leading through, you will reach another family area which is overlooked by the well apportioned kitchen with stainless steel appliances and dishwasher.

The master bedroom is cleverly located at the rear of the home to maximise on privacy and boasts a huge ensuite.

Neutral decor sets the contemporary style of the home with quality timber floors and complementing new plush carpets featuring throughout.

Timber decking features in the alfresco area and the yards have been created for easy maintenance. Completing the picture is a double remote garage and a parkland outlook from the verge.

This property is for sale at WELL below replacement costs for all on offer, so bag yourself a bargain with this one. Beautifully decorated and appointed, one of the

The above information provided has been furnished to us by the vendor/s. We have not verified whether or not that information is accurate and do not have any belief in one way or the other in its accuracy. We do not accept any responsibility to any person for its accuracy and do no more than pass it on. All interested parties should make and rely upon their own inquiries in order to determine whether or not this information is in fact accurate.

🛏 4 🗺 2 🚗 2

<b>Price</b>	SOLD for \$320,000
<b>Property Type</b>	residential
<b>Property ID</b>	1817
<b>Land Area</b>	301 m2

### Agent Details

Trevor Black - 0419 923 858  
Gabriella Black - 08 9255 1444

### Office Details

Midvale  
Unit 3 1 Muros Pl Midvale WA 6056  
Australia  
08 9255 1357

