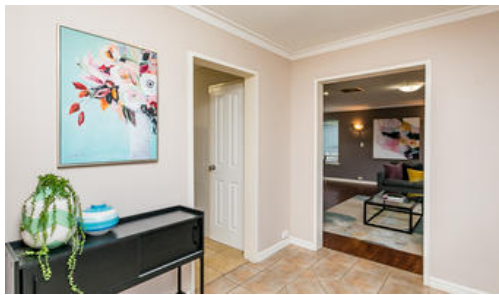


Sold



2 Chapman St, Swan View



### Price 'In the \$400s'

Great opportunity to secure your future as this property has a zoning (R20/35) and an extra wide frontage that gives it excellent subdivision potential\*.

Whether you are a 1st homebuyer, investor or downsizer, this property can tick the boxes of most demographics.

A solid and spacious 4 bedroom home that has a lounge with lots of natural light, hard wearing floors and plenty of room for that big lounge/sofa and entertainment system.

The adjoining dining room can be used as a formal eating area, alternatively would make a great computer/office area.

The remodelled galley kitchen is one of the nicest we have seen at this price point and has lots of bench space where you need it most next to the stainless steel oven and gas hotplates, a double sink, dishwasher, lots of under bench storage plus a pantry and more full height storage.

The kitchen area also has capacity for informal dining which frees up the formal dining area and has direct access to the outside entertaining area.

A tastefully modernised bathroom has floor to ceiling tiles and quality fixtures and fittings.

The property is located in a great location, close to schools, shopping and public transport.

The above information provided has been furnished to us by the vendor/s. We have not verified whether or not that information is accurate and do not have any belief in one way or the other in its accuracy. We do not accept any responsibility to any person for its accuracy and do no more than pass it on. All interested parties should make and rely upon their own inquiries in order to determine whether or not this information is in fact accurate.

🛏 4 📶 1 🚗 1

<b>Price</b>	SOLD
<b>Property Type</b>	residential
<b>Property ID</b>	1994
<b>Land Area</b>	787 m2

### Agent Details

Trevor Black - 0419 923 858  
Gabriella Black - 08 9255 1444

### Office Details

Midvale  
2/220 Morrison Road Midvale WA 6056  
Australia  
08 9255 1357

