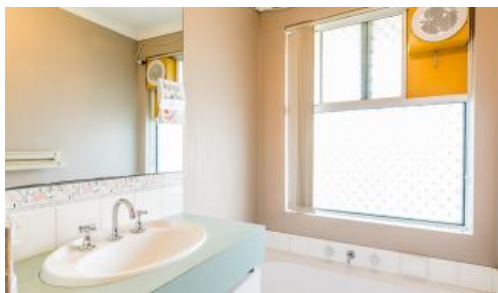
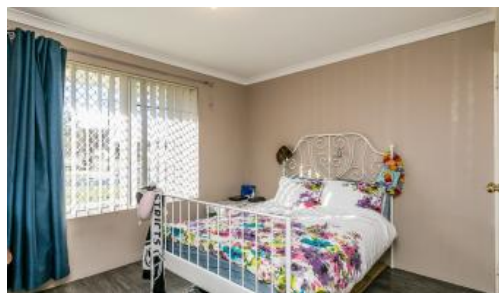




**Unit 1, 27A Mathoura St, Midland**



HOME OPEN SUBJECT TO COVID LOCKDOWN BEING LIFTED. ALL ATTENDEES MUST ABIDE BY COVID GOVERNMENT POLICY

ASKING PRICE "IN THE MID \$200s"

A fantastic location within walking distance to Midland Gate shopping centre makes this property perfect for the homeowner or investor, in a suburb that has shown excellent capital growth recently.

This good looking 2 bedroom unit features:

- Brick and tile construction
- Built 1991
- 271sqm block
- 2 bedrooms with built in robes
- Hard wearing flooring
- Kitchen/meals
- Lounge
- Split system air conditioner
- Gas cooking
- Security screens
- Private courtyard
- Undercover carport
- Walking distance to primary school and day care
- Walking distance to Midland Gate shopping centre
- Close to St John of God Hospital

🛏 2 🚿 1 🚗 1

**Price** SOLD for \$245,000  
**Property Type** Residential  
**Property ID** 2032

#### Agent Details

Trevor Black - 0419 923 858  
 Gabriella Black - 08 9255 1444

#### Office Details

Midvale  
 2/220 Morrison Road Midvale WA 6056  
 Australia  
 08 9255 1357



This unit has the added benefit of having the carport as being the only wall adjoining the next unit.

The above information provided has been furnished to us by the vendor/s. We have not verified whether or not that information is accurate and do not have any belief in one way or the other in its accuracy. We do not accept any responsibility to any person for its accuracy and do no more than pass it on. All interested parties should make and rely upon their own inquiries in order to determine whether or not this information is in fact accurate.